



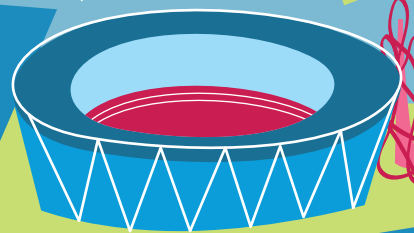
Queen Mary
University of London



TEACHING BY
INTERNATIONAL
EXPERTS

IN THE TOP
100
UNIVERSITIES
in the WORLD
QS WORLD
UNIVERSITY
RANKINGS

VICTORIA PARK



Russell Group
university

SHOREDITCH

COLUMBIA ROAD



BRICK LANE

LIVERPOOL
STREET

BARTS &
THE LONDON

WHITECHAPEL

MILE END

Study Abroad Guide 2017/18

NOBEL PRIZE
Winning ALUMNI

ONE OF
THE 25
MOST
INTERNATIONAL
UNIVERSITIES
in the WORLD
(TIMES HIGHER
EDUCATION)

Campus
experience
IN THE HEART OF
LONDON

MINUTES AWAY FROM
CENTRAL LONDON
OLYMPIC PARK
WEST END
OXFORD CIRCUS
VICTORIA PARK
SHOREDITCH



WELCOME TO QUEEN MARY UNIVERSITY OF LONDON

London is the ultimate Capital city; a cosmopolitan mecca encompassing a rich heritage, breath-taking architecture, diverse culture and world-class study opportunities. Queen Mary University of London (QMUL) perfectly embodies the City's dynamic and exciting nature.

The University's East End location offers a true taste of London life in one of the most urban, trendy and progressive areas of the Capital. Founded in 1887 QMUL is a vibrant, dynamic and ambitious institution. Its Study Abroad Programme attracts inquisitive and high achieving students worldwide, who thrive in the stimulating and supportive environment the University offers.

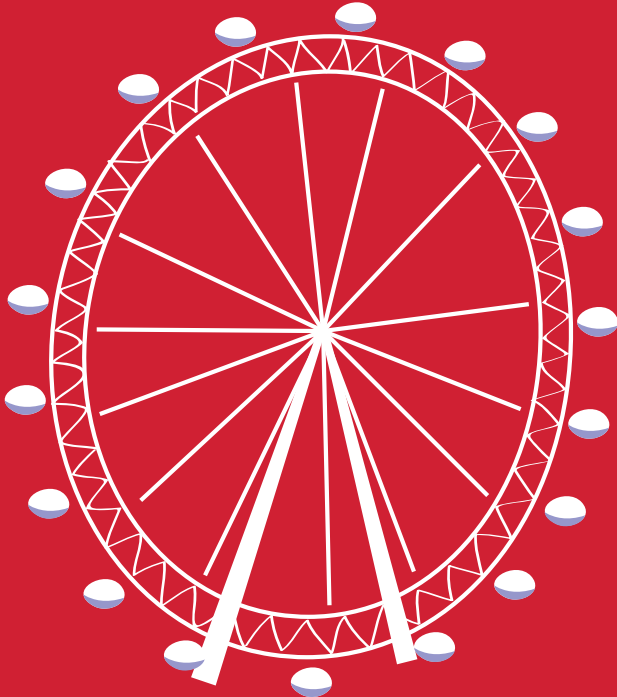
Campus Life at QMUL offers our study abroad students an experience unlike any other. Our Student Village offers full integration for students and the vast number of clubs, societies and social events ensure an engaging and well-rounded experience. You will have the opportunity to make friends from across the Globe, study alongside inspirational and forward-thinking students, receive support and guidance from dedicated staff, as well as teaching from world-leading academics.

Our Study Abroad Team has been welcoming students for over thirty years and delivers an outstanding student experience. QMUL is committed to ensuring our students have the most memorable and enriching experience possible. The University is a supportive and engaging Community producing outstanding Alumni.



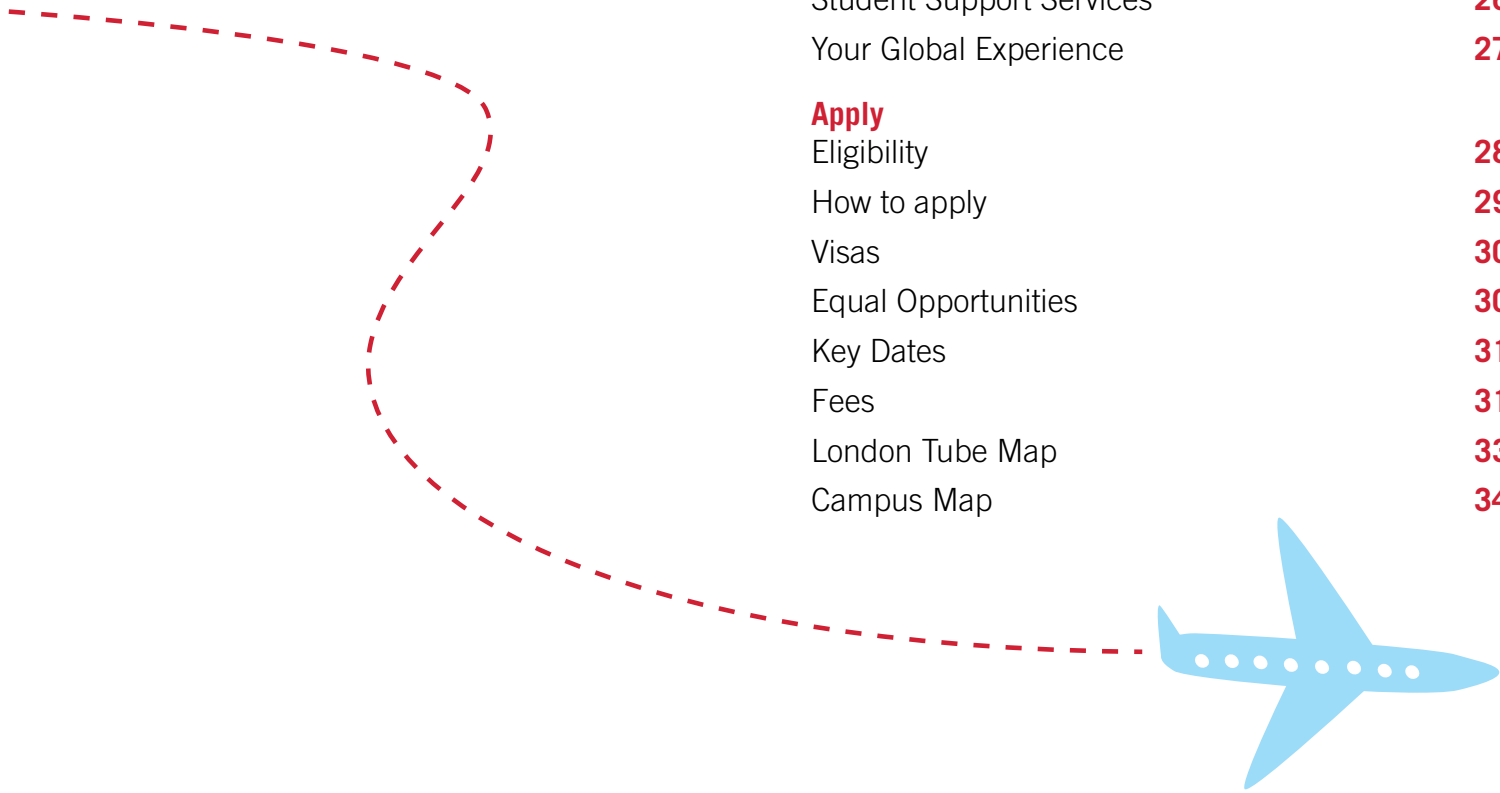
Simon Gaskell

Professor Simon Gaskell
President and Principal



CONTENTS

| | |
|--------------------------|----|
| Explore | |
| Why Choose QMUL? | 4 |
| Our History | 6 |
| London and The East End | 8 |
| Study | |
| Teaching and Learning | 12 |
| Study Abroad Programme | 14 |
| Student Life | |
| Campus Life | 18 |
| Accommodation | 24 |
| Student Support Services | 26 |
| Your Global Experience | 27 |
| Apply | |
| Eligibility | 28 |
| How to apply | 29 |
| Visas | 30 |
| Equal Opportunities | 30 |
| Key Dates | 31 |
| Fees | 31 |
| London Tube Map | 33 |
| Campus Map | 34 |

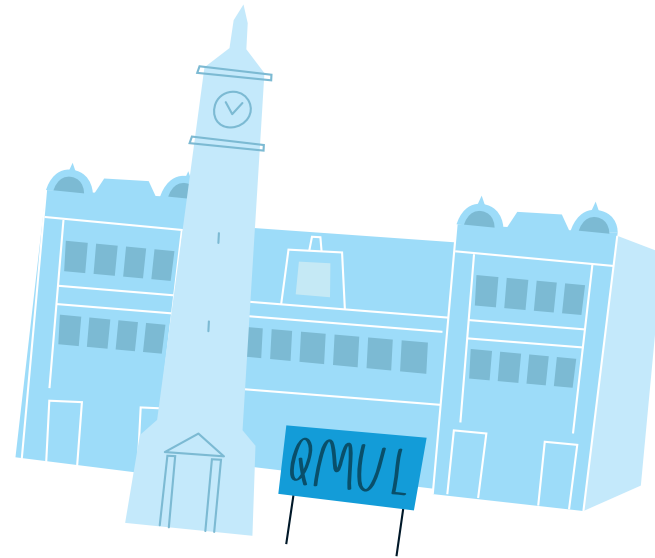


**RUSSELL
GROUP**

EXPLORE

WHY CHOOSE QMUL?

From our location in the heart of east London – one of the capital's most dynamic areas – to our welcoming campus, world-leading research and inspiring teaching, there's a host of reasons to choose QMUL for your study abroad experience.



21,187
students in total*

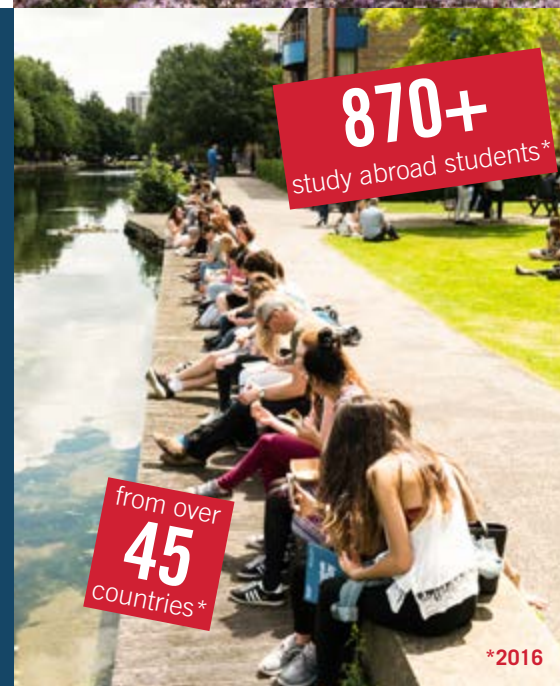


* accurate August 2016

Reputation

- Member of the Russell Group – one of the UK's 24 leading universities
- Ranked in the top 100 in the world in the QS University World Rankings (2016)
- Top 10 university in the UK for research quality, Research Excellence Framework (REF) 2014
- Six Nobel Prize-winners among former staff and alumni
- Distinguished history, dating back to 1123 (the foundation of St Bartholomew's Hospital)
- Part of the internationally recognised University of London (UoL)

870+
study abroad students*



from over
45
countries*

*2016

We are international

- A truly international experience in one of the most culturally-diverse areas of London
- One of the 25 “most international” universities in the world (*Times Higher Education*, 2016)
- Students from more than 155 nationalities studying at QMUL
- International partnerships with top international institutions globally including University of California, University of Miami, Columbia University, University of Melbourne, University of Guadalajara, University of Toronto, Sichuan University, Xiamen University, Nanyang Technological University to name but a few.

What will you gain as a study abroad student?

The University has been welcoming study abroad students for over thirty years and consistently delivers outstanding student experience. As a study abroad student you will be studying and living in our Mile End Campus, a unique urban campus in London's diverse and multi-cultural East End. Here you have access to all academic and support facilities on site, award-winning housing and a dedicated Study Abroad team. Queen Mary offers a fully integrated Study Abroad Programme so you will be living and studying alongside students from the UK and countries all over the world. Our study abroad students are immersed in culture and have a truly international experience.

Facilities

- £142m spent on new facilities in the past five years
- Some of the largest open-plan laboratories in Europe housed in our Blizard Building
- 7,700 square metres of new learning and teaching space opening in 2016
- Access to facilities at the Olympic Village which hosted the London 2012 Games

15,474
Undergraduate students*



4,842
Postgraduate students*



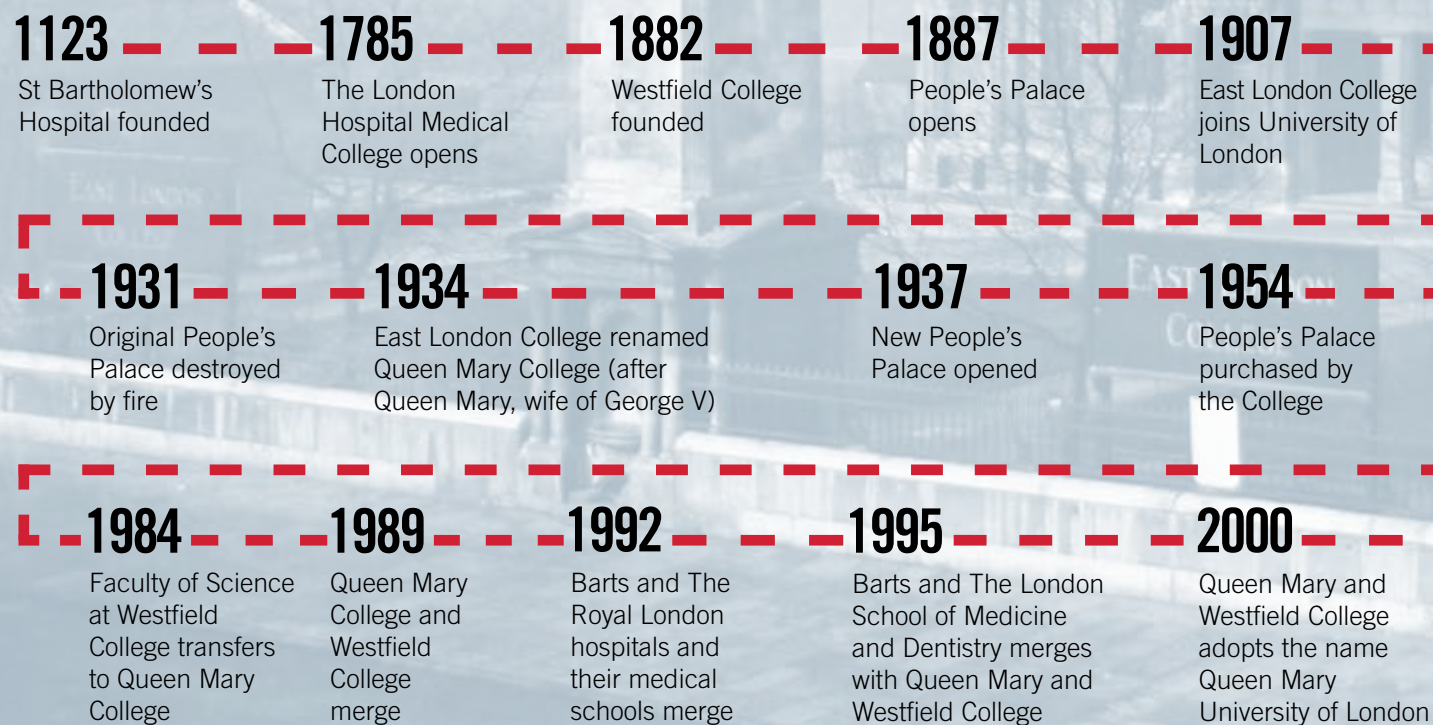
QMUL Community

- Only university in London able to offer an attractive residential campus at our home in Mile End
- Short walk from the creative and social hubs of Brick Lane and Shoreditch, and close to London's financial centres, the City and Canary Wharf
- Set beside the Regent's Canal in Mile End, our main campus is one stop on the Tube from Stratford's Queen Elizabeth Olympic Park, and minutes from the West End.

EXPLORE

OUR HISTORY

QMUL has a rich history and has remained true to its origins to the present day as a welcoming institution dedicated to providing an education for all. The College's Archives hold a wealth of fascinating institutional archives and rare prints, dating from the 17th Century to the present day.



QUEEN MARY TODAY

2004

Westfield Student Village opens on Mile End campus

2005

The Blizzard Building, home to the Blizzard Institute of Cell and Molecular Science, opens

2008

Queen Mary ranked 11th in the UK for quality of its research following national assessment of research quality (*Guardian*)

First students in Beijing graduate from the Joint Programme degrees taught by Beijing University of Posts and Telecommunications and Queen Mary

2011

The £21m ArtsTwo Building opens, housing the School of History and a film and drama studio

2012

£6m restoration and upgrade of People's Palace completed

Queen Mary wins the *Times Higher Award* for Research Project of the Year

Queen Mary joins Russell Group of leading UK universities



2014

Construction work commences on a new £39m Graduate Centre at the Mile End campus

Queen Mary ranked 9th in the UK for the quality of our research among multi-faculty universities following the Research Excellence Framework (REF 2014).

2016

Queen Mary ranked as one of the top 100 universities in the world (*THE World University Rankings* 2015-16)

We have the second oldest surviving Jewish cemetery in England, a Spanish Portuguese Jewish cemetery dating from 1726, in the centre of our campus.



EXPLORE

LONDON AND THE EAST END

London ranks in the Top 3 Best Places to study abroad* and it is easy to see why. Studying at QMUL, you will have the opportunity to experience one of the greatest cities in the world. London is not just a capital city -the centre of British politics and governments – it is an international centre of excellence for business, culture and the arts. With more students than any other city in Europe, London is an extraordinary place to live and study. There is something for everyone in London and student life here is full of unlimited opportunities.

With a population of 7.8m and more than 300 languages spoken (more than any other city in the world), the people of London represent cultures from every corner of the earth. This is reflected in London's huge range of festivals, restaurants, religions and community groups.

It's a welcoming city. To become a Londoner, all you need to do is live here – and as we are the only London university to offer you a residential campus in the heart of the capital, you're in a great position to take advantage of all that this incredible city has to offer. Not only is London an inspiring place to study, it is also Britain's economic and cultural powerhouse. The city is a magnet for people and talent from across the globe, making London one of the world's most cosmopolitan and exciting cities.

Travel

Whether exploring Britain, continental Europe or the rest of the world, London is the ideal place to start any journey. The city is a hub for the national network of roads and rail lines which connect the UK. Travel to Europe is easy with a wide choice of trains through the Channel Tunnel to Paris and Brussels, a range of cross-channel ferries and numerous international flights. London's airports are all easily accessible by rail.

*Top 10 Study Abroad Destinations for 2017, Go Abroad



TRAVEL TIME BY TRAIN

London - Edinburgh 4 hours
London - Cardiff 2.5 hours
London - Paris 2.5 hours
London - Cambridge 45 mins
London - Bath 1.5 hours
London - Brussels 2 hours

Find out about travel all over the UK and Europe from London
www.nationalrail.co.uk
www.raileurope-world.com

Student demand, means that London can be a cost effective place to study, with student discounts available throughout the City.

Calculate your study abroad budget at
www.studentcalculator.org.uk



EXPLORE

THE EAST END

QMUL is situated in the heart of east London, an area with a rich history which is now one of the City's most vibrant and cosmopolitan areas. The East offers contrasts unlike any other area of London, from the bustle of street markets to peaceful walks along Regent's Canal and through Victoria Park, traditional pubs, museums, start-ups and art galleries. Despite being one of London's oldest areas it also contains the ultra-modern Docklands development which boasts some of Europe's most exciting architecture.

Studying at QMUL gives you a unique East End experience where you can enjoy authentic east London life. You are exposed to East End culture, an array of different people, places, cuisine and perspectives. East London offers a true taste of life as a local.



London reached heights of 34 C° in summer 2016, so your sun-screen is just as important as your umbrella in the Capital!

In the UK and London you will experience all of the four seasons. If you study for a full year you will see varied weather including sunshine, autumnal colours, rain and even some snow!

| Average temperatures | | |
|----------------------|----------|--------------------|
| September – October | 16 C° | Warm-cool |
| November-December | 7-10 C° | Cool-cold |
| January-March | 5-6 C° | Cold |
| April – June | 10-16 C° | Warmer weather |
| July – August | 18-22 C° | Warm (for the UK!) |



STUDY

92%

of our students praised staff for explaining their subject well in the National Student Survey (NSS 2015)

TEACHING AND LEARNING

QMUL is one of the world's top research universities and a member of the elite Russell Group. As a study abroad student at QMUL, you will study in an environment renowned for the quality of its teaching and research.

Students at QMUL are taught by academic staff who are leaders in their field and research-active, meaning that their teaching is directly influenced by the latest research in their areas of expertise. QMUL prides itself on offering teaching excellence and student satisfaction. With access to excellent teaching and study facilities and engaging academic staff involved in cutting edge research, QMUL students are given the necessary platforms to achieve and flourish.

TimeLine and Academic Credits

The QMUL academic year is divided into two twelve-week teaching semesters (Semester A: mid-September to mid-December and Semester B: January to March) and a six-week examination term (May to mid-June). Study abroad students who attend QMUL during Semester B (whether they are here for the full year or for that semester only) are required to be present during the exam term if their classes are assessed by examination.

At QMUL classes ('modules') are normally worth 15 credits per semester, though there are some worth 30 credits. Study abroad students normally take 60 credits a semester, or a total of 120 credits for a full year. QMUL credits will be translated by your home institution into their own credit system (e.g. four credits per module for a 16-credit semester system). As the teaching time for both semesters is of equal length, we recommend that full credits be awarded for each module completed no matter which semester you attend. This is in accordance with QMUL's practice for its degree students.

Grading and Assessment

Assessment methods vary across modules and disciplines, and can include essays, problem sets, tests, presentations, projects and exams. Generally you will find that the number of assessments will be fewer, although no less rigorous, than you are used to at home. Students studying at QMUL for the full year, or Semester B only, will be assessed in the same way as full degree QMUL students. This may include an examination during the May/June exam period. The examination timetable is not usually published until the last week of the Spring semester (end of March); if your module is assessed by examination you should not make any arrangements for returning home before you know the dates of any examinations.

As there is no formal examination period at the end of Semester A (Autumn); if you are here for that semester only you will be assessed by what is termed alternative assessment. In some cases this will be by a written examination but more often by additional module papers/essays. Please note that these arrangements only apply to students who are here for Semester A only.

Grades and Transcripts

The QMUL grading system uses five letter grades (A-E) to indicate the various levels of passes. You may have heard that 'A' grades are harder to come by in the UK system, and this is certainly true at QMUL. 'A' grades are exceptional, 'B' is considered a good grade, 'C' an average grade, 'D' is a passing grade but must be regarded as below average, and 'E' is a bare pass. 'F' indicates a fail.

Following assessment, your grades will be transferred back to your home institution. They will be reported in the standard A-F format on a QMUL transcript. Your QMUL transcript will be accompanied by a recommended grade conversion scale. You should check with your home institution to find out if they translate grades into their own system or record them as given by QMUL.

Transcripts for students leaving December are released in February. Transcripts for all other students are released in July.



Subject List

- Biological and biomedical sciences
- Business and management
- Chemical sciences
- Comparative literature
- Computer science
- Design
- Drama
- Economics and finance
- Electronics, telecommunications, music and audio systems
- Engineering
- English
- Film studies
- Geography and environmental science
- Global health
- Global Shakespeare
- History
- Information technology
- Languages and cultures
- Law
- Linguistics
- Materials science and engineering
- Mathematical sciences
- Multimedia and arts technology
- Physics and astronomy
- Politics and international relations
- Psychology

LEARN AT THE CUTTING EDGE

Your learning at QMUL will be about much more than piles of textbooks and hours in the lecture theatre. With its world-renowned libraries, galleries, labs, museums and archives, London is a living resource for your studies. We use a wide range of innovative teaching techniques that are designed to bring to life our cutting-edge research and encourage you to embark on your own investigations.



For complete module listings please visit:
www.qmul.ac.uk/modules

STUDY

STUDY ABROAD PROGRAMME

QMUL has been welcoming study abroad students for over thirty years. Our established programme and team deliver excellence across all areas, ensuring first-rate student experience is at the forefront of our delivery.

Customise *your* study plan

QMUL offers a range of academic options across subject areas, with 950+ modules open to our study abroad students over the academic year.

We recognize the importance of being able to *cross-register* in different academic departments and we make this fully accessible to our students. All students are encouraged to take modules outside of their degree specialisations and many joint programmes run across the university. To make this possible, the course system used follows a flexible modular model. For the Study Abroad Programme this allows students the freedom to take modules from across the whole range of the College's academic departments. Students can concentrate module selections within one department or may take a semester load of four modules across different departments.

QMUL's Study Abroad Programme is fully immersive. You have access to all of the facilities and experiences that our full degree students have!

"QMUL is [also] very multicultural...I made friends from all over the world. It is also one of the only universities in London that has everything you could ever possibly need on one campus"

"The more I got to know east London, the more I loved it. The Columbia Road Flower Market was one of the prettiest places I had ever visited"

Amy, Melbourne University, Autumn 2015,

Study on a *fully integrated* programme

Queen Mary offers a fully integrated study abroad programme so you will be living and studying alongside students from the UK and countries all over the world. Our study abroad students are immersed in culture and have a truly international experience.

Pre-register for modules

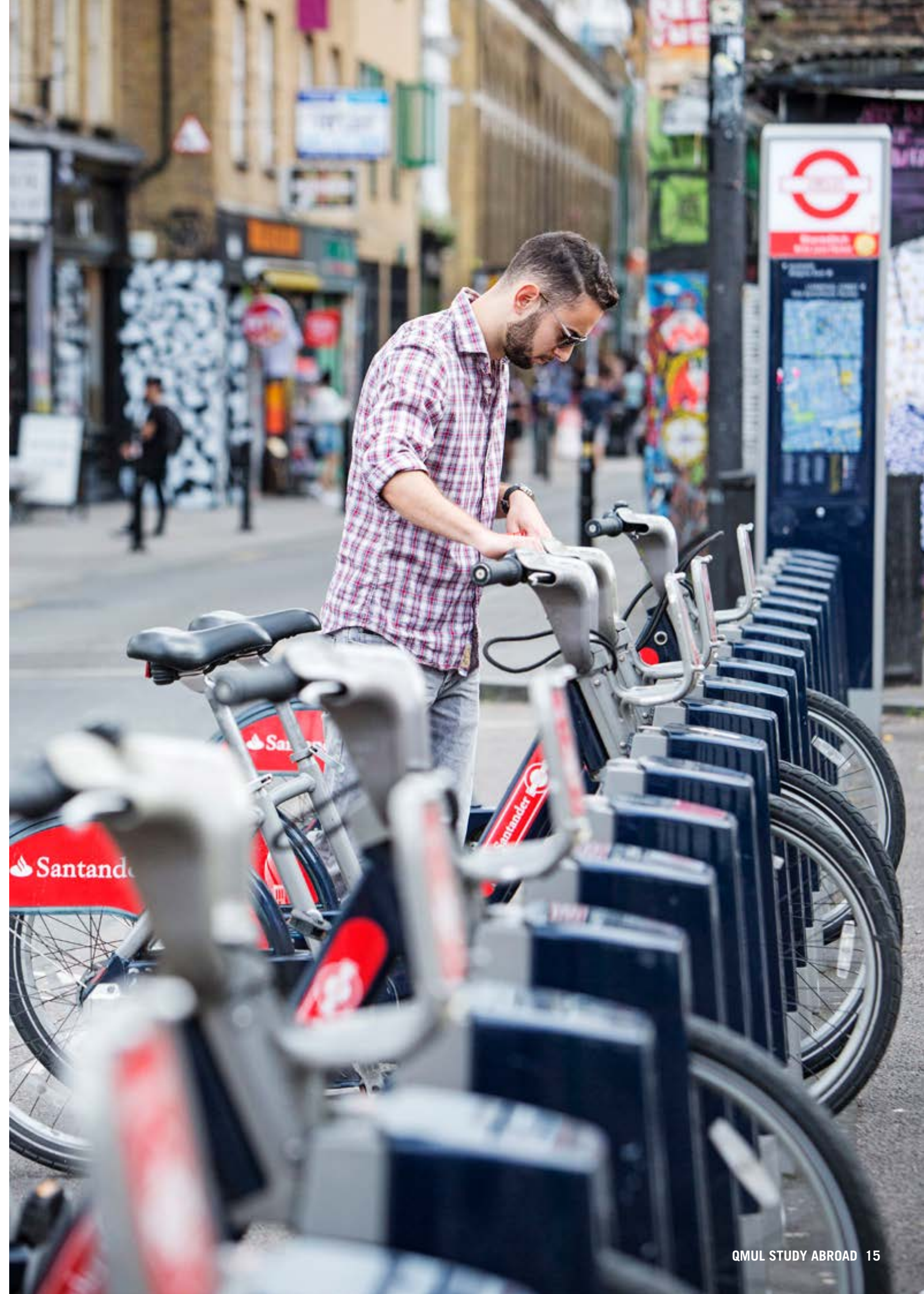
Our study abroad students can select their module choices before starting the programme. Students will normally take four modules per semester, but can make up to eight choices when module registration opens. Registration usually opens in May for full year and autumn semester students and October for spring semester students. We also allow students to add/drop modules when they arrive at QMUL during the first 2-weeks of term.

Access to an *Academic Support* Network

QMUL have Study Abroad Co-ordinators in every academic department who can advise you on module choices and requirements before you arrive and are an essential part of your support network during your studies.

"I absolutely loved the city, the friends I made, and the experiences I was afforded. I'd go back tomorrow"

Erika, University of Denver, QMUL Fall 2015



STUDENT LIFE

A PEACEFUL OASIS IN A BUSY CITY

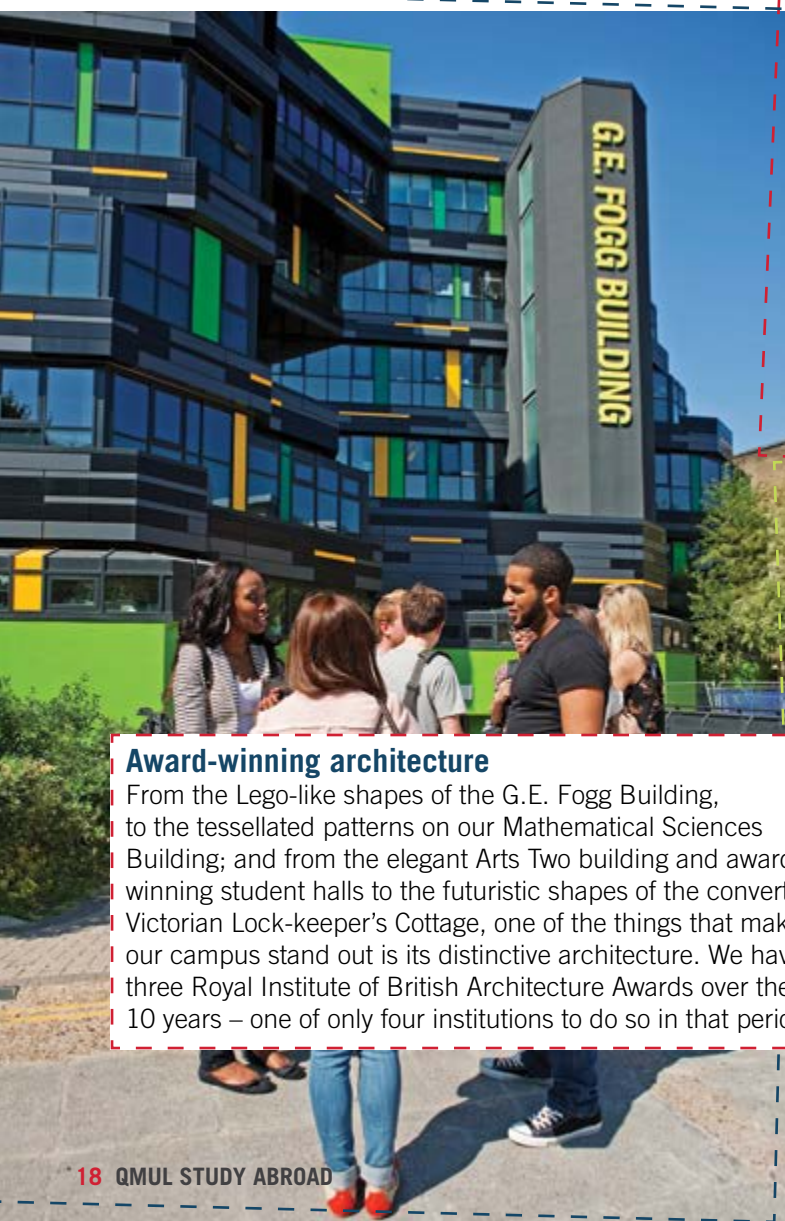
Our award-winning, self-contained campus is set beside the Regent's Canal, looking on to Mile End Park. It has a friendly, relaxed atmosphere: with plenty of greenery and attractive outdoor spaces here, it's easy to forget that you're in the middle of a bustling capital city. As a study abroad student with us, this is where you will be based if you choose to live on campus.



STUDENT LIFE

CAMPUS LIFE

On our Mile End site, you will be able to enjoy all the advantages of a campus lifestyle: a friendly community of staff and students, safety and convenience. We have two shops, four cafés, two restaurants, a bar, a gym, a bookshop and a bank on site. All this and only 15 minutes from the West End. Here's our guide to what you'll find.



Award-winning architecture

From the Lego-like shapes of the G.E. Fogg Building, to the tessellated patterns on our Mathematical Sciences Building; and from the elegant Arts Two building and award-winning student halls to the futuristic shapes of the converted Victorian Lock-keeper's Cottage, one of the things that makes our campus stand out is its distinctive architecture. We have won three Royal Institute of British Architecture Awards over the past 10 years – one of only four institutions to do so in that period.



Top Students' Union bar

Our Students' Union bar, Drapers' Bar and Kitchen, offers a relaxed space to eat and drink. As well as offering tasty burgers at only £2.50, it hosts great student party nights each week. It won the Best Students' Union Venue of the Year at the Ents Forum Awards 2014 (under 1,000-capacity category).

The centre of knowledge

At the heart of our Mile End campus is Library Square. This is where you'll meet friends and relax over a coffee (or practise your backflips). It's also home to Mile End Library, which was designed by the same architect who worked on the British Library.



"For me, our campus is the best in London! I have been to the other campuses to visit my friends and they all agree that QMUL is the best"

Aqeel Rafiq, Computer Science
with Industrial Experience BSc

STUDENT LIFE

CAMPUS LIFE

Amazing venues and concert facilities

As well as cutting-edge contemporary architecture, we have beautiful historical buildings, each with its own fascinating history. Built in 1936, the Great Hall in the art-deco People's Palace is the venue for graduation ceremonies, concerts, and large events. The Octagon is a surviving part of the original People's Palace and was QMUL's old library. It is now an impressive events space.

"QMUL is large enough to have all the facilities and influence of a world-class university, but not so large as to be impersonal. For that reason, it's a great place to build a network of colleagues and friends, in which to base a life"

Dr Shahidha Bari, Lecturer,
School of English and Drama

Flat whites and gelato on campus

We've got nine food outlets on campus including restaurants, coffee shops and two grocery stores. Ground Café serves the best coffee on campus and gourmet Gelupo gelato ice creams. Mucci's serves delicious salad, pizza and pasta, and is good value too.

Keep fit in our gym

Our health and fitness centre, Qmotion, has a sports hall, squash court and gym with a cardiovascular zone, a resistance zone and free weights. Our gym instructors can advise on training regimes and run around 35 classes per week. There's also a women-only gym area, as well as yoga and pilates classes. We offer subsidised gym membership (rates start from £14 per month).

Discover a piece of East End history on campus

At the heart of the campus is a unique feature, the recently re-landscaped Novo Cemetery, a Spanish and Portuguese Jewish burial ground, which dates back to 1733. Next to the site is a seating area for contemplation.

STUDENT LIFE



OUR STUDENTS' UNION

Your Students' Union

When you start your studies at QMUL, you automatically become a member of Queen Mary University of London Students' Union (QMSU). The Union aims to improve your student experience by listening to your feedback and opinions, representing your views, and providing student-led activities and services.

Get involved

Student groups – Club Sport and Societies

There are hundreds of student groups to get involved with that will help you make new friends, spark new interests, and gain new skills and experiences! With over 200 societies, 60 sports clubs and a variety of media outlets, there is something for everyone. Each of our societies provides a unique and exciting experience, offering a great opportunity to meet people with the same interests as you. Being part of a sports club is a great social experience and an excellent way to develop your sporting skills. Sports clubs compete in local, national and international competitions. You can also take your first steps towards a career in journalism by getting involved with student media. From radio to print, all of the student media outlets are inspiring and supportive places to get your voice heard.

QMSU Representing You!

The Union's Executive Officers represent and work for Queen Mary students. They make sure students' voices are heard when decisions are made that affect them and raise issues and run campaigns on their behalf. They also direct the Union in the way students want it to be run and to suit their needs.

The Union also has Welfare Representatives at Mile End who represent the needs and voices of various student groups, these include:

- LGBT+ Representative
- Multi-Cultural Representative
- Disabled Students' Representative
- International Students Representative
- Womens Representative
- Welfare Representative

Find out more: www.qmsu.org/rep/welfare/me

Hey Buddy!

Settling into a new country and university can be a daunting experience, but not when you've got a buddy! The Union Buddy Scheme matches current Queen Mary students, who have been on a study abroad programme with one of our partner institutions (mentors) with new Study Abroad Programme students (mentees) to ensure you get the most out of your time at QMUL. The Buddy Scheme gives new students a chance to meet other new students on the Study Abroad Programme, as well as get tips and advice about university life from experienced mentors.

Volunteering

The Union supports the local community through volunteering, fundraising and sports programmes. Volunteers log thousands of hours in one-off and ongoing opportunities with charities and not-for-profit organisations. Volunteering groups, set up by students, deliver projects in the likes of local hospitals, schools and community centres. Raise and Give (RAG) raises thousands of pounds each year for student-nominated.

Entertainment

The Union runs a lively events programme offering a range of activities including day trips, live music, club nights, spoken word and more. Some past favourites include gala balls, language lessons, graffiti painting and a floating cinema. The Union's student groups also run a variety of events too, so there's always something to do!

Other facilities

The Union offers a range of other facilities including bookable rooms for student groups, social spaces to chill out and relax in, and a multi-faith space for prayer and contemplation.

Find out more about QMSU at www.qmsu.org



STUDENT LIFE

ACCOMMODATION

Study abroad students are guaranteed* accommodation on Queen Mary's Mile End campus in modern, self-catered flats. All rooms are single occupancy and the majority have en-suite (private) bathroom facilities. Typically rooms are grouped in flats for between four and six students with shared kitchen facilities. All rooms are carpeted, equipped with a single bed, wardrobe, bookshelves, desk, chair and storage space. Many rooms contain their own mini-fridge. Kitchens are fully equipped with refrigerators, freezers, cookers, storage cupboards, food preparation areas and dining areas. Study abroad students are placed in mixed flats allowing them to live with students from the UK and many other countries. Limited single gender housing and accessible housing for students with disabilities is also available.

Our Mile End Halls of Residence are all within a maximum 5 minute walk of each other. Visiting your friends is easy and our 24 hour Security Team are on hand if you want someone to escort you across campus in the evening!

We offer en-suite and single-sex accommodation. You can select these options when making your accommodation application.

*provided you apply by the Residences application deadline. Please see the Residences website for full details of application procedures and deadlines. You will be invited to apply for University accommodation after you firmly accept your offer to study.
www.residences.qmul.ac.uk/college/application

"QMUL Campus was one of the most exciting aspects about studying at Queen Mary, I couldn't wait to be a short walk from my classes, live with roommates and feel a sense of community."

"Living with people from all over the world has given me the opportunity to learn about their cultures"

Natalia, Hunter College, NYC, Spring 2016,

See what it's like:
for virtual tours of our
rooms and full details of the
accommodation options, visit
residences.qmul.ac.uk

**Our Halls of Residence
have on-site Hall
Stewards who can assist
with queries anytime**



View of France House hall of residence, Mile End campus, taken from the Regent's Canal tow path

STUDENT LIFE

STUDENT SUPPORT SERVICES

At QMUL we are here to support you from before you arrive, throughout your studies and as valued alumni of our Study Abroad Programme. Our dedicated Study Abroad Team are here to assist with any queries you may have and provide ongoing support whilst you study with us. QMUL offers a wide range of services to help you make the most of your time with us.

Welcome Programme and Social Programme:

Our Welcome Programme will help you feel at home straight away. We collect you from the airport and offer practical advice about living and studying in London, as well as a student boat party down the River Thames. We also run a programme of social events for study abroad students throughout the year. For 2016/17 events will include tours of the Houses of Parliament, BBC Broadcasting House, Emirates Football Stadium, Harry Potter Studios and more!

Here are a few of the on-campus services we provide:

- Advice and Counselling Service
- Disability and Dyslexia Service
- 24 hour Campus Security Service
- St Benet's Chaplaincy
- Multi Fair Centre
- Pastoral Support through chaplains
- 24 hour Residences welfare support
- Student Health Centre
- Departmental advisers
- Language Centre
- Libraries
- IT Services
- Student Enquiry Centre
- Careers Service
- QMSU Buddy Scheme
- International Week: our Students' Union runs this series of events to celebrate the world cultures of the people who make up the QMUL community.



Find out more about
QMUL Support and Services
[www.qmul.ac.uk/
studentlife/support/](http://www.qmul.ac.uk/studentlife/support/)



Additional Support throughout your degree

For students whose first language is not English, we support your English skills throughout your studies, with a free programme of courses, workshops and tutorials during the academic year. These will help you with areas such as academic writing, grammar and vocabulary, lecture comprehension, seminar skills and general English.

We also offer support with academic study skills such as time management, revision, and exam technique.

YOUR GLOBAL EXPERIENCE

Developing Global Citizens is a priority for QMUL. As a study abroad student you will bring with you cultural and study experiences which enhance the classroom and the lives of those you meet.

Studying abroad at QMUL offers you the opportunity to study alongside UK and international students from all parts of the world and will allow you to have a unique study experience in the heart of London.

Employers consider QMUL students in high regard, we are consistently in the top 10 UK universities for graduate starting salaries (*The Times* and *Sunday Times* University League Table 2016). Therefore studying abroad at QMUL holds you in the same regard as our full degree students and your global experience is in demand.

According to a recent study by the International Unit, 64% of employers think international experience is important for recruitment and say graduates with an international background are given greater professional responsibility.



APPLY



ELIGIBILITY

To be eligible to apply for the QMUL Study Abroad Programme you must meet the following entry requirements:

Academic

- Completed a minimum of one year of University level study prior to studying on the programme
- Have a minimum CGPA of 3.0/4.0 or equivalent - students who are graded on a different grading scheme are welcome to apply. We welcome a range of international qualifications. If you are unsure about your eligibility please do contact us on study-abroad@qmul.ac.uk. Further details can be found here: www.qmul.ac.uk/international/studyabroad/apply

English Language

- If your first language is not English or you have not studied in an English speaking education system then we require proof of English Language proficiency.
- You must meet the minimum requirements of the University in order to be eligible. QMUL accepts IELTS and other equivalent qualifications*. Students who do not meet our minimum English Language requirements may be considered for the Study Abroad with English Language Programme.
- Academic requirements vary depending on the modules you wish to study, please view our website for more information*

www.qmul.ac.uk/international/international-students/studyabroad/apply/

Study Abroad with English Language Programme

If your first language is not English or you have not studied in an English speaking education system, you may wish to consider our Study Abroad with English Language Programme.

Queen Mary's Study Abroad with English (also known as Summer Pre-Sessional Programmes) run for 9 or 5 weeks. They are designed to develop your English language and academic study skills, and prepare you for your semester or year abroad studying as part of the Study Abroad Programme from September. The Study Abroad with English Programmes offer you a stimulating academic experience and the teaching team is committed to making sure that you complete the programme successfully.

The programme is specifically designed for students who either do not meet the minimum English Language requirements to study directly on the Study Abroad Programme, or who want the opportunity to further develop their English in the weeks prior to the start of the Study Abroad Programme.

Please note that different academic schools will require different levels of English Language proficiency. Therefore you should check that for the academic modules you wish to study at QMUL your level of English will be sufficient after studying the Study Abroad with English Language Programme. You can find full details of this on our website:

www.qmul.ac.uk/international/international-students/englishlanguage/requirements/guidelines/

More information about the Study Abroad with English Language Programme can be found here:

www.qmul.ac.uk/international/international-students/studyabroad/english/

The application process for both the Study Abroad Programme and Study Abroad with English Language Programme are the same. See page 29 for full details.



HOW TO APPLY

Queen Mary accepts applications in 4 different ways:

1. Direct Applications from students at any university; students can apply online at: www.qmul.ac.uk/international/studyabroad
2. Via an institution which has an agreement for study abroad with Queen Mary; students should consult their home institutions' Study Abroad Adviser to see if this is the case and to check on any special application arrangements.
3. Through a Study Abroad Programme Provider. Queen Mary currently works with Arcadia University College of Global Studies, Butler University Institute for Study Abroad, IES Abroad, ISA, SUNY Brockport and Study Abroad Foundation (SAF); students should refer to publications issued by these organisations for application procedures
4. Through Queen Mary's existing exchange agreements with international partner institutions. Consult your home institution and follow their application procedure.

When to apply?

Full Year or Autumn Semester – Apply from January to 8th July in the year of entry

Spring Semester – Apply from May until 7th October prior to the year of entry

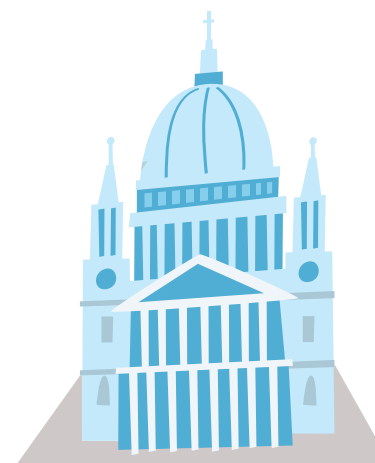
Applications are considered on a rolling basis and will be considered after these dates if places are still available.

Application checklist and next steps:

- ☐ Check you meet the eligibility criteria
- ☐ Work with your home university adviser to select the modules you want to study at QMUL and ensure they are approved/transfer back
- ☐ Gather your transcripts and academic reference details and proof of language proficiency (if applicable)*
- ☐ Apply online to QMUL
- ☐ Receive a decision on your application within 48 hours (provided you have included all supporting documents)
- ☐ Accept your offer
- ☐ Make your module selections when module registration opens
- ☐ Apply for accommodation
- ☐ Apply for a visa (if required)
- ☐ Book your flights to London**
- ☐ Book onto QMUL's Airport Collection Service
- ☐ Read all of our 'Countdown Emails' carefully prior to arrival
- ☐ Pack and get ready for your arrival in London
- ☐ Arrive in London and move into accommodation
- ☐ Attend the Welcome Programme and begin classes
- ☐ Complete all Welcome Programme/Orientation tasks
- ☐ Enjoy your time at QMUL!

*You can apply in advance of obtaining all supporting documents, however please note your offer may be conditional upon providing official evidence of these. If you do not yet meet the full requirements, you may apply and an offer may be conditional upon achieving stated results/qualifications.

**Do not connect or enter the EU via Ireland due to visa restrictions



*The eligibility information above is accurate as of August 2016. Please check our website for the most up-to-date information www.qmul.ac.uk/international/international-students/studyabroad/apply/

APPLY



Visas

Depending on your home country, you will be required to gain either a Short Term Student Visitor Visa or a Tier 4 Student Visa. Once accepted to QMUL, you will be provided with the documentation required to obtain your visa. For further information, please visit our website:

www.qmul.ac.uk/international/international-students/studyabroad/immigration/index.html

Equal Opportunities

Queen Mary welcomes students from all over the world. The College Charter states that the work of the College shall be carried out in a spirit of tolerance, freedom of opinion, mutual concern and community service, and undertakes to avoid discrimination against any person on the grounds of religion, race, sex or politics.

Study Abroad Students with Disabilities

Queen Mary University of London has a specialist service to support disabled students, including what is called in the UK 'specific learning difficulties', eg. dyslexia and dyspraxia.

The Disability and Dyslexia Service (DDS) can provide a wide range of support, from additional time in examinations to access to assistive technology (such as text-to-speech software) to mentoring for students with mental health issues.

Students requiring advice, guidance or support should contact the Global Opportunities Office. To ensure support can be provided it is important that the Global Opportunities Office be notified of any support required as soon as possible. Students

need to provide recent evidence of their disability written in English to ensure they can access the services Queen Mary offer.

The support on offer includes:

- Access to special examination arrangements, such as additional time (NB: students with specific learning difficulties, or what are often termed 'learning disabilities' are eligible for 25% additional time in the UK).
- Library concessions.
- Access to the assistive technology suites across Queen Mary.
- Access to a pool of loaned equipment.
- Support in accessing on-campus accommodation.

More information is available at: www.dds.qmul.ac.uk

"After a semester at Queen Mary, I returned home to the question "What exactly is the East End?" ... it made the experience more authentic. On my walks toward Stepney Green, I could see the Gherkin building in the city skyline."

Ariana, Boston College, Spring 2015

"I studied abroad to challenge myself in a new environment and experience something new and exciting"

"Living on campus is a unique luxury for a London University and the campus is only 3 tube stops from Tower Hill (Tower of London)"

Adam, Melbourne University, Fall 2015



KEY DATES

Dates for 2018 will be released later in 2017. Please check our website for the most up-to-date list of key dates.

| | |
|------------------------------|---|
| Application deadline* | Friday 7 October 2016 Friday 8 July 2017 |
| Arrive on campus | Wednesday 4 January 2017 Saturday 18 September 2017 Sunday 19 September 2017 |
| Orientation | Thursday 5 and Friday 6 January 2017 Monday 20 and Tuesday 21 September 2017 |
| Semester begins | Monday 9 January 2017 Monday 27 September 2017 |
| Semester ends | Friday 31 March 2017 Friday 17 December 2017 |
| Vacation | Monday 3 April – Friday 28 April 2017 N/A |
| Exam period** | Tuesday 2 May – Friday 9 June 2017 |
| *National holidays | 1 and 28 May 2017 N/A |

*Application deadlines are set to guarantee college housing – please contact us by email if you are applying after the deadline as spaces may still be available.

**Students are required to remain at College until assessments for all their courses have been completed and should not make any arrangements for leaving College before they know the dates of their examinations. The exam timetable is published towards the end of the Spring semester.

FEES

Tuition Fees

Tuition fees are based on 2016/17 prices. Fees for academic year 2017/18 will be released in late 2017. Please check our website for the latest fees information.

Full Year - £15,450

Autumn Semester - £7,725

Spring Semester - £7,725

Accommodation Fees

En suite Room (private bathroom):

Academic Year: £5,836

Autumn Semester: £2,303

Spring Semester: £3,379

Shared Bathroom:

Academic Year: £5,112

Autumn Semester: £2,018

Spring Semester: £2,960

Residential fees are average figures based on 2016/17 prices. Residential fees are reviewed annually in May/June.



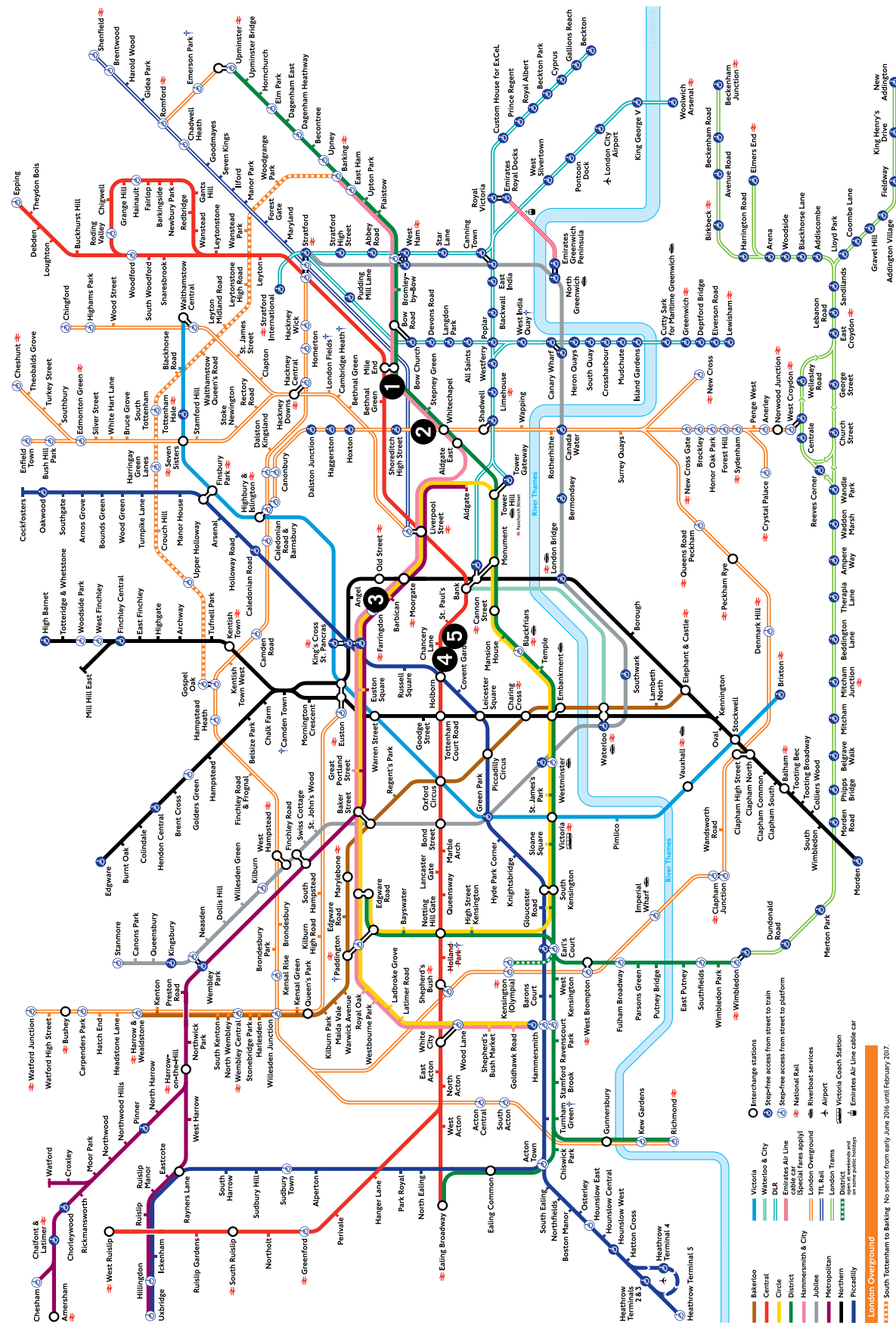
Shoreditch High Street



Shoreditch High Street is a 15 minute tube ride from Mile End. A popular area with QMUL students it is home to Bangla-town, Brick Lane, London's celebrated curry mile, Spitalfields market and more!

LONDON TUBE MAP

(Tear this page out and keep as a handy guide)



MAYOR OF LONDON

24 hour travel information
0343 223 1734

Sign up for email updates
tfl.gov.uk/emailupdates

@tflTravelAlerts

TRANSPORT FOR LONDON
EVERY JOURNEY MATTERS

© Transport for London Reg. No. 161673040/P

1 Mile End campus 2 Whitechapel campus 3 Charterhouse Square campus 4 Lincoln's Inn Fields campus 5 West Smithfield campus

Improvement works may affect your journey, please check before you travel

Version A TFL 06 2016

Correct at time of going to print

MILE END CAMPUS

For more detailed campus information, see: qmul.ac.uk/about/howtofindus

| Educational/Research | Residential | Facilities | Information |
|--|-----------------------|---|---|
| ArtsOne | Albert Stern Cottages | Advice and Counselling Service | Visitors who require further information or assistance should please go to the main reception in the Queens' Building. |
| ArtsTwo | Albert Stern House | Housing Hub | |
| Arts Research Centre | Beaumont Court | Bookshop | The smoking of cigarettes or tobacco products are only permitted at designated smoking areas / shelters indicated on this map. |
| Bancroft Building | Chapman House | Careers Centre | |
| Bancroft Road Teaching Rooms | Chesney House | Clock Tower | Electronic cigarettes permitted on outside spaces only . |
| Peter Landin Building (Computer Science) | Creed Court | CopyShop | |
| Engineering Building | France House | The Curve | These premises are alarmed and monitored by CCTV; please call Security on +44 (0)20 7882 5000 for more information. |
| G.E. Fogg Building | Feilden House | Disability and Dyslexia Service | |
| G.O. Jones Building | Hatton House | Drapers' Bar and Kitchen | Key |
| Geography | Ifor Evans Place | Canalside | |
| Informatics Teaching Laboratories | Lindop House | Ground Café | Library/bookshop |
| Joseph Priestley Building | Lodge House | The Hive | Fitness centre |
| Library | Lynden House | Infusion | Refreshment: Bar/Eatery/Coffee place |
| Law | Maurice Court | IT Services | Staff car park |
| Lock-keeper's Cottage | Maynard House | Mucci's | Bicycle parking |
| Mathematical Sciences | Pooley House | Occupational Health Service/ Student Health Service | Bicycle lockers |
| Occupational Health and Safety Directorate | Selincourt House | Octagon | Cash machine |
| The People's Palace/Great Hall | Varey House | Portering and Postal Services | Smoking area / shelter |
| Queens' Building | | Qmotion Health and Fitness Centre | |
| Temporary Building | | Sports Hall | |
| | | Santander Bank | |
| | | Security | |
| | | St Benet's Chaplaincy | |
| | | Students' Union Hub | |
| | | Student Enquiry Centre | |
| | | Village Shop | |
| | | Westfield Nursery | |

New Graduate Centre construction site

Engineering Building construction site

No access between Geography Square and Bancroft Road before 8am and after 6.30pm Mon–Fri. Closed weekends.



Contact us

Global Opportunities Office
Queen's Building, Room E09
email: study-abroad@qmul.ac.uk
Tel: +44 (0)20 7882 5075

Follow us on Facebook and Twitter:
[@QMULStudyAbroad](#)

qmul.ac.uk

**RUSSELL
GROUP**